

Big W Trailer Jacks

Top Wind Trailer Jacks

#2000 LB - 10" (VI-020)

Features:

- Top wind
- 10" weld collar zinc plated
- Maximum weight 2000 lbs
- Lift 10"
- Height - 11-1/2"

How to Order:

VI-020



#5000 LB - 15" (82471-BW)

(Mounting bracket not included)

Features:

- Top wind
- 15" (used on Big W ball trailers)
- Maximum weight 5000 lbs
- Lift 15"
- Height - 15-1/2"

How to Order:

82471



#2000 LB - 15" (VI-520)

Features:

- Top wind
- 10" weld collar zinc plated
- Maximum weight 5000 lbs
- Lift 15"
- Height - 15-1/2"

How to Order:

VI-520



Mounting bracket for p/n
82471 Big W trailer jack

How to Order:

82500



#5000 LB - 10" (VI-555)

Features:

- Top wind
- 15" weld collar zinc plated
- Maximum weight 5000 lbs
- Lift 15"
- Height - 15-1/2"

How to Order:

VI-555



Side Wind Trailer Jacks

#5000 LB - 10" (VI-050)

Features:

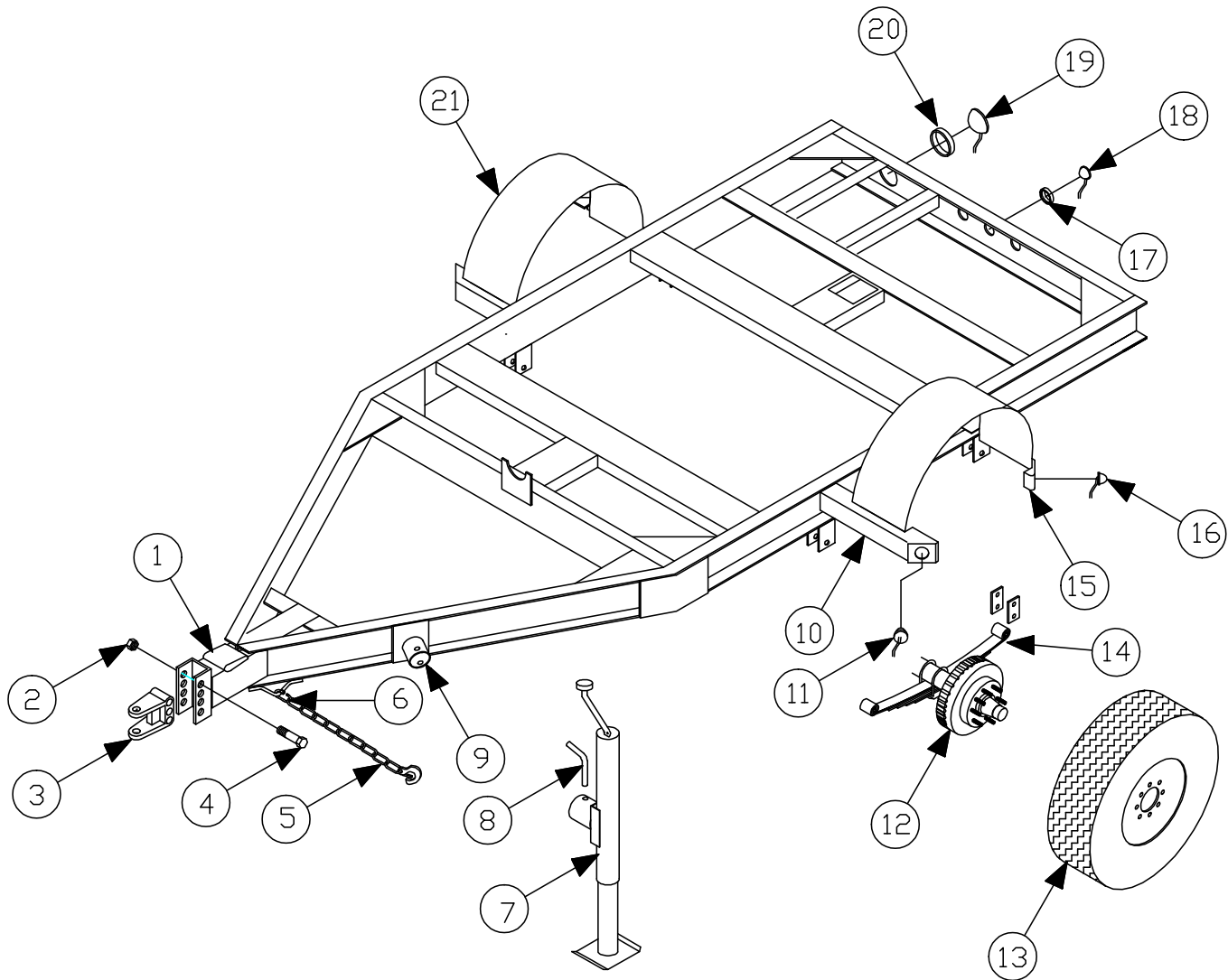
- Side wind
- 10"
- Maximum weight 5000 lbs
- Lift 10"
- Height - 11-1/2"

How to Order:

VI-050



Big W 500 Gallon Tank Trailer - Parts



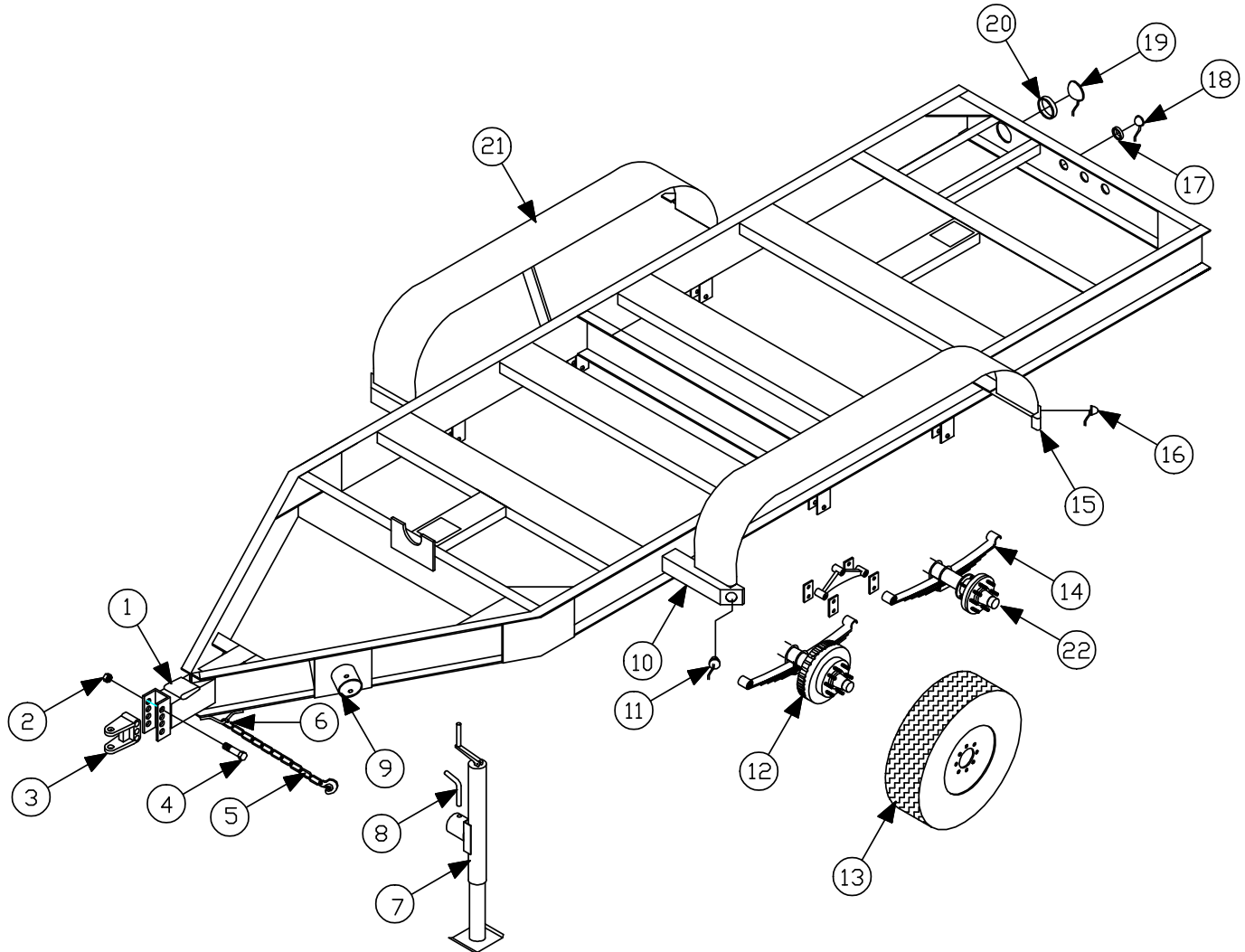
TRAILER PARTS

REF	PART NO.	QTY	DESCRIPTION
1	TR-4844600183	1	Model 6 Actuator 6 Hole Offset
2	10405	3	Nut
3	18078	1	Clevis Hitch
4	9093	3	Bolt
5	SC3835	2	Safety Chain w/Clevis Hook
6	TR-TLC12	2	7/16"-1/2" Safety Chain Clevis
7	VI-555	1	5000# Top Wind Jack 15"
8		1	Pin (included w/jack)
9		1	Jack Bracket
10	TR-BW10S-1	2	Big W 10" Fender Bracket LF/RR
11	M195A	2	2" LED "PC" Side Marker Amber

REF	PART NO.	QTY	DESCRIPTION
12	008-219-9B	2	865 Hub w/ Brakes (7000 lbs.)
13	TR-ST235/80R-16	2	ST235/80R-16 Hwy Tire & Wheel
14	072-032-00	2	Spring Slipper
15	TR-BW10S-2	2	Big W 10" Fender Bracket RF/LR
16	M195R	2	2" LED "PC" Side Marker- Red
17	TR-M174R	3	2" Light Grommet
18	M194R	3	2" LED Side Marker - Red
19	M817R-7	2	4" LED Stop/Turn/Tail Light
20	TR-B426-18	2	4" Light Grommet
21	10X33FENDER	2	Fenders

Big W 1025 Gallon Tank Trailer - Parts

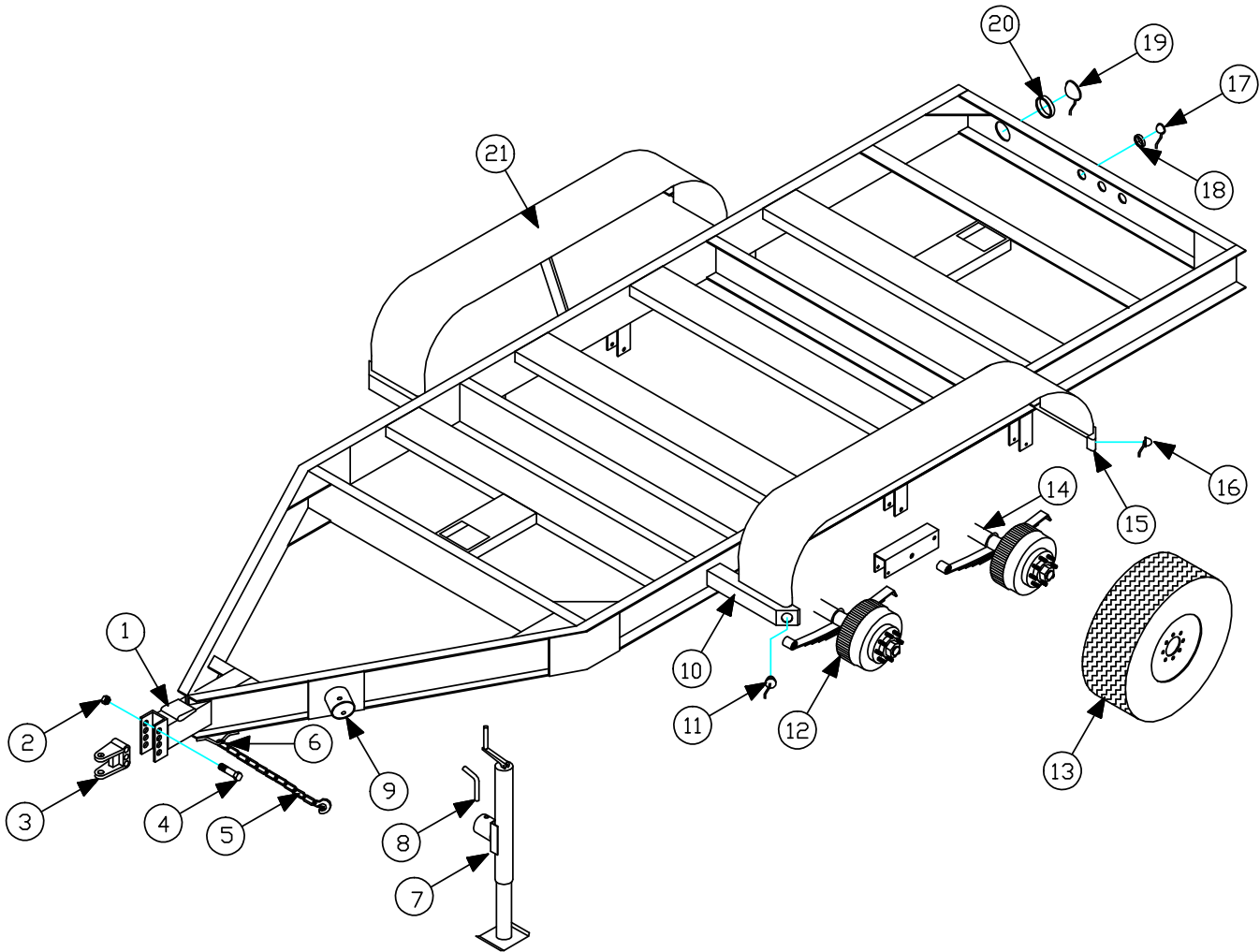
TRAILER PARTS



REF	PART NO.	QTY	DESCRIPTION
1	TR-4876300	1	Model 20 Actuator
2	10405	3	Nut
3	18078	1	Clevis Hitch
4	9093	3	Bolt
5	SC3835	2	Safety Chain w/Clevis Hook
6	TR-TCL12	2	7/16"-1/2" Safety Chain Clevis
7	82471	1	Jack (5000 LBS)
8	95719	1	Pin (included w/jack)
9	82500	1	Jack Bracket
10	TR-BW10S-1	2	Big W 10" Fender Bracket LF/RR
11	TR-M165A	2	2" LED "PC" Side Marker, Amber

REF	PART NO.	QTY	DESCRIPTION
12	TR-1586059	2	Dexter 7K Brake-60" Slipper
13	TR ST235/80R-16	4	ST235/80R-16 Hwy Tire & Wheel
14	072-032-00	4	3500 lb. Slipper Spring
15	TR-BW10S-2	2	Big W 10" Fender Bracket RF/LR
16	TR-M165R	2	2" LED "PC" Side Marker- Red
17	TR-M164R	3	2" Light Grommet
18	TR-146-18	3	2" LED Side Marker - Red
19	TR-M417R-5P	2	4" LED Stop/Turn/Tail Light
20	TR-B426-18	2	4" Light Grommet
21	12X72T	2	Tandem Fender (14-1/2" Drop)
22	TR-4511172	Opt	Dexter 7K Idler Axle - Option

Big W 1650 Gallon Tank Trailer - Parts



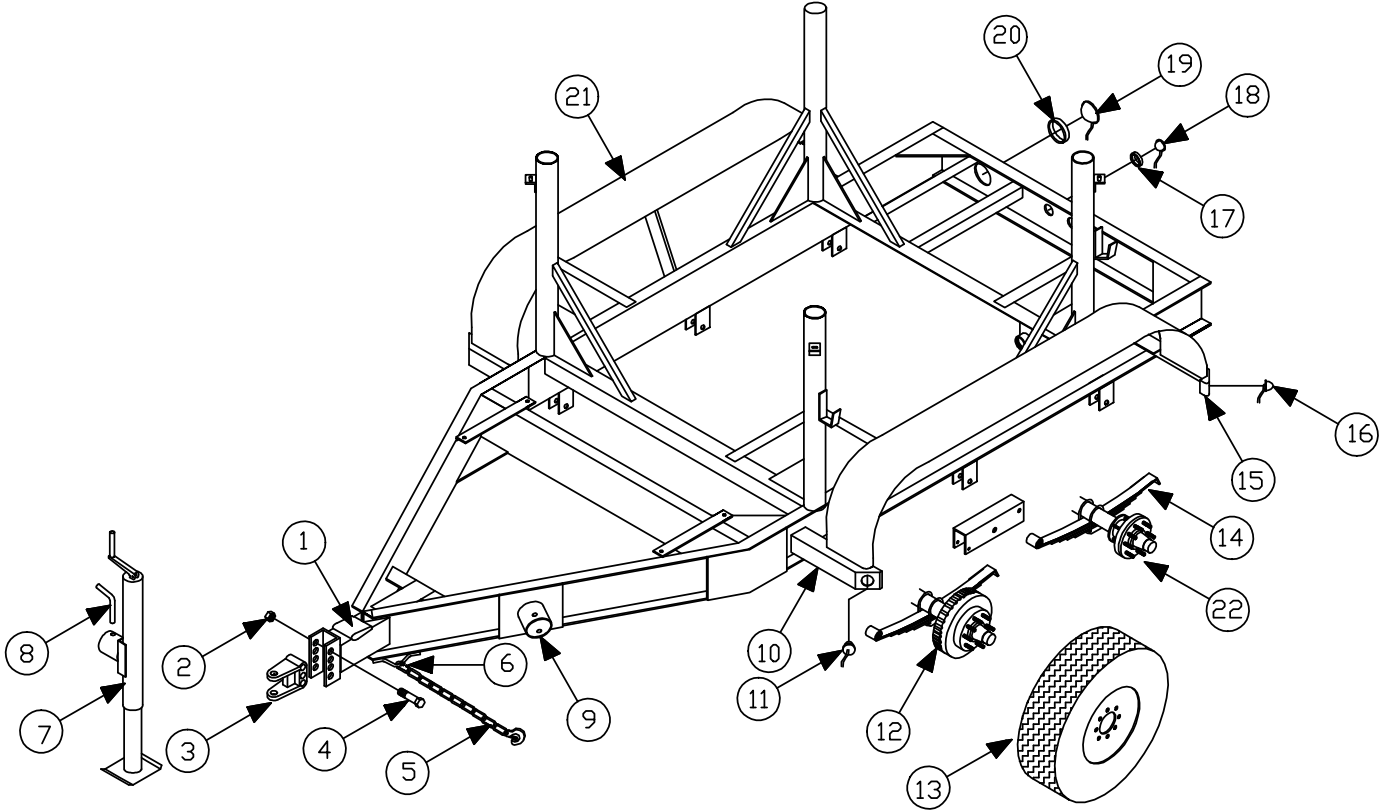
TRAILER PARTS

REF	PART NO.	QTY	DESCRIPTION
1	TR-4876300	1	Model 20 Actuator
2	10405	3	Nut
3	18078	1	Clevis Hitch
4	9093	3	Bolt
5	SC3836G70	2	Safety Chain w/Clevis Hook
6	TR-TCL12	2	7/16"-1/2" Safety Chain Clevis
7	82471	1	Jack (5000 lb.)
8	95719	1	Pin (included w/jack)
9	82500	1	Jack Bracket
10	TR-BW12S-1	2	Big W 12" Fender Bracket LF/RR
11	TR-M165A	2	2" LED "PC" Side Marker, Amber

REF	PART NO.	QTY	DESCRIPTION
12	TR-K08-285-90	4	8K Hub & Drum
13	1200165	4	Tire & Wheel
14	TR-2608383	2	Dexter 8K 9/16 Brake Axle
15	TR-BW12S-2	2	Big W 12" Fender Bracket RF/LR
16	TR-M165R	2	2" LED "PC" Side Marker, Red
17	TR-M174R	3	2" LED Side Marker, Red
18	TR-146-18	3	2" Light Grommet
19	TR-M417R-5P	2	4" LED Stop/Turn/Tail Light
20	TR-B426-18	2	4" Light Grommet
21	12X75	2	Fender (cut to 14" drop)

Big W 1085 Gallon Ball Tank - Parts

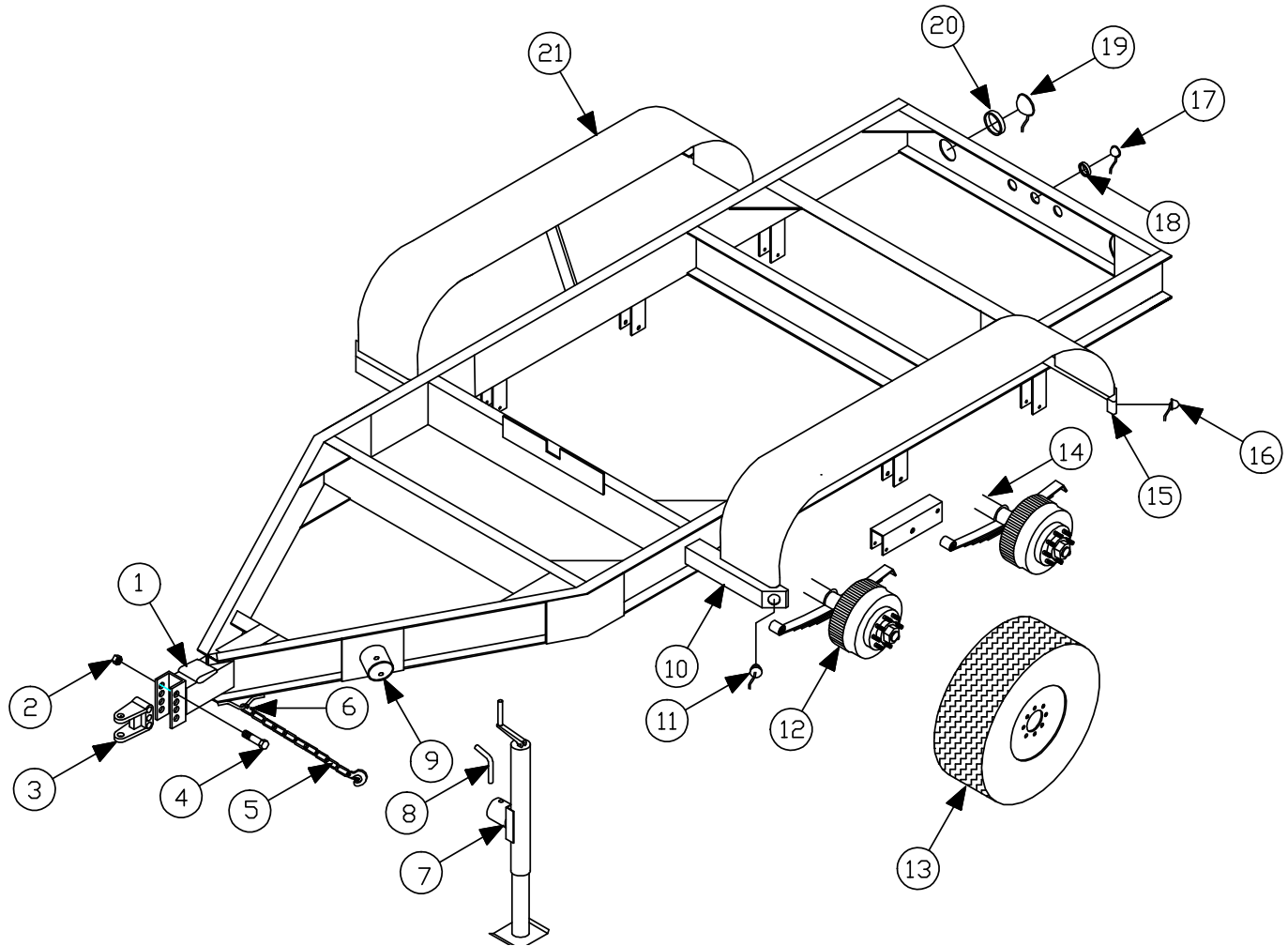
TRAILER PARTS



REF	PART NO.	QTY	DESCRIPTION
1	TR-4876300	1	Model 20 Actuator
2	10405	3	Nut
3	18078	1	Clevis Hitch
4	9093	3	Bolt
5	SG3835	2	Safety Chain w/Clevis Hook
6	TR-TCL12	2	7/16"-1/2" Safety Chain Clevis
7	82471	1	Jack (5000 lb.)
8	95719	1	Pin (included w/jack)
9	82500	1	Jack Bracket
10	TR-BW10S-1	2	Bif W 10" Fender Bracket LF/RR
11	TR-M165A	2	2" LED "PC" Side Marker, Amber

REF	PART NO.	QTY	DESCRIPTION
12	008-219-9B	4	865 Hub w/ Brakes (7000 lb.)
13	TR-ST235/80R-16	4	ST235/80R-16 Hwy Tire & Wheel
14	072-032-00	4	Spring Slipper
15	TR-BW12S-2	2	Big W 12" Fender Bracket RF/LR
16	TR-M165R	2	2" LED "PC" Side Marker, Red
17	TR-M164R	3	2" Light Grommet
18	TR-146-18	3	2" LED Side Marker, Red
19	TR-M417R-5P	2	4" LED Stop/Turn/Tail Light
20	TR-B426-18	2	4" Light Grommet
21	12X72T	2	Tandem Fender 14-1/2" Drop
22	008-219-9A	Opt	865 Idler Hub (7000lb.) - Option

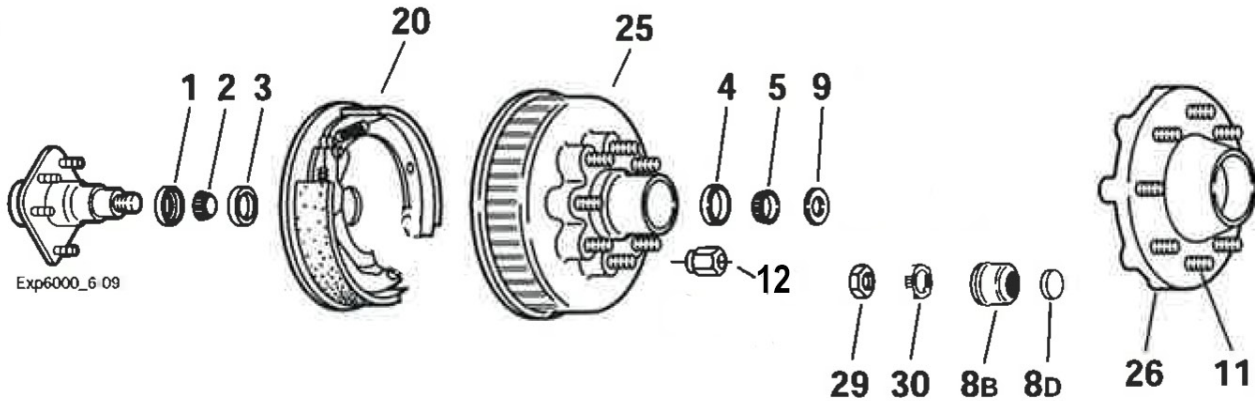
Big W 240 Trailer - Parts



REF	PART NO.	QTY	DESCRIPTION
1	TR-4876300	1	Model 20 Actuator
2	10405	3	Nut
3	18078	1	Clevis Hitch
4	9093	3	Bolt
5	SG3836G70	2	Safety Chains w/Clevis Hook
6	TR-TCL12	2	7/16"-1/2" Safety Chain Clevis
7	82471	1	Jack (5000 lbs.)
8	95719	1	Pin (included w/jack)
9	82500	1	Jack Bracket
10	TR-BW12S-1	2	Big W 12" Fender Bracket LF/RR
11	TR-M165A	2	2" LED "PC" Side Marker, Amber

REF	PART NO.	QTY	DESCRIPTION
12	TR-K08-285-90	4	8K Hub & Drum
13	1200165	4	Tire & Wheel
14	TR-2608386	2	Dexter 8K 9/16 Brake Axle Comp
15	TR-BW12S-2	2	Big W 12" Fender Bracket RF/LR
16	TR-M165R	2	2" LED "PC" Side Marker, Red
17	TR-M164R	3	2" LED Side Marker, Red
18	TR-146-18	3	2" Light Grommet
19	TR-M417R-5P	2	4" LED Stop/Turn/Tail Light
20	TR-B426-18	2	4" Light Grommet
21	12X75	2	Fender (cut to 14" drop)

TRAILER PARTS



Grease Lube Parts

Item	Part #	Description
1	010-054-00	Grease Seal 2.25"
1	010-036-00	E-Z Lube® Seal 2.25"
2	031-030-02	25580 Inner Bearing Cone
3	031-030-01	25520 Inner Bearing Cup
4	031-017-01	14276 Outer Bearing Cup - 865 Hub
5	031-017-02	14125A Outer Bearing Cone - 865 Hub
8B	021-043-01	Grease Cap for E-Z Lube® - 865 Hub
8D	085-001-00	E-Z Lube® Rubber Plug
9	005-057-00	Spindle Washer
29	006-191-00	Special Jam Nut for E-Z Lube® (after 2002)
30	006-190-00	Spindle Nut Retainer for E-Z Lube® (after 2002)

Hubs

Item	Part #	Description	Bolt Circle
Hubs/Drums			
25	008-219-04	Grease 1/2" Stud	8 on 6.50
Plain Hubs			
26	008-231-09	Grease 1/2" Stud	8 on 6.50

Studs & Wheel Nuts

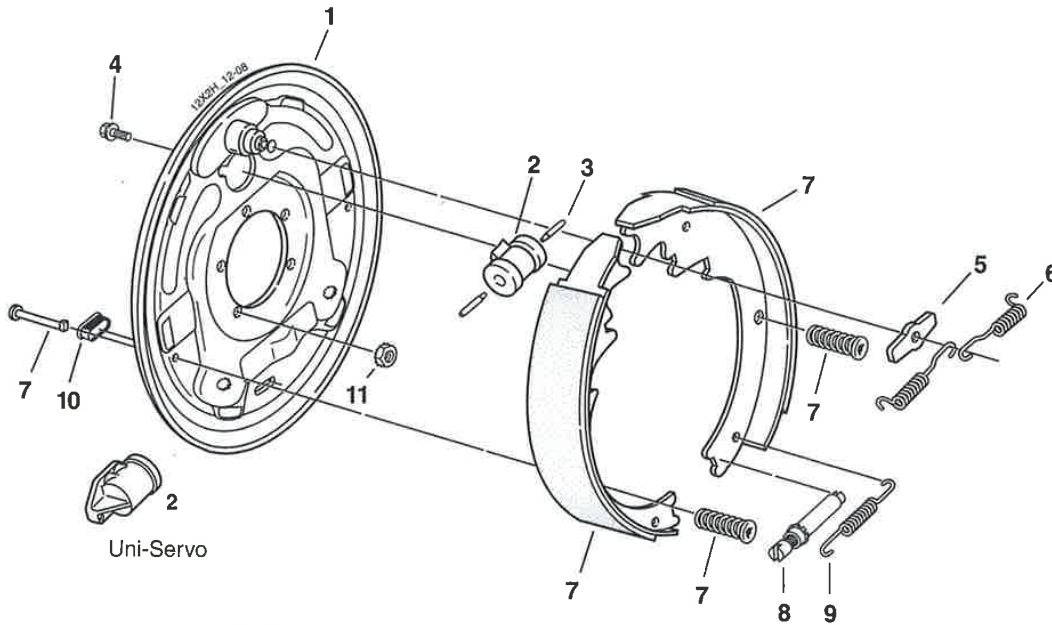
Item	Part #	Description
11	007-122-00	1/2-20 x 1.84 Long Press-in Stud* Idler (hubs prior to 1-04)
11	007-262-00	1/2-20 x 2.50 Long Press-in Stud* Hub/Drum (hubs after 1-04)
12	006-080-00	1/2-20 60° Cone Nut

Brakes

Item	Part #	Description
ns	K23-338-00/K23-339-00	LH/RH Hydraulic Uni-Servo 7K
20	**	12" x 12" Hydraulic Brake

12" x 2" Hydraulic Brake

7,000 lbs. Capacity



Hydraulic Brake 7000 lb.

Item	Part #	Qty/ Brk	Description
+0	K23-338-00	1	LH Complete Brake Assembly US
+0	K23-339-00	1	RH Complete Brake Assembly US
1	036-093-08	1	Backing Plate Assembly
2	054-064-00	1	LH Brake Cylinder Uni-Servo
2	054-065-00	1	RH Brake Cylinder Uni-Servo
3	054-060-00	1 or 2	Cylinder Push Rod US (1) DS (2)
4	087-001-00	2	Sems (screw & water assembly)
5	005-113-00	1	Anchor Post Washer
6	046-101-00	2	Retractor Spring
7	K71-269-11	1	LH Shoe & Lining Kit Contains: 1 #040-219-00 LH Primary Shoe & Lining 1 #040-218-02 LH Secondary Shoe & Lining 2 #046-077-00 Shoe Hold Down Spring & Cup 2 #049-077-00 Shoe Hold Down Pin #4
7	K71-270-22	1	RH Shoe & Lining Kit Contains: 1 #040-219-00 RH Primary Shoe & Lining 1 #040-218-01 RH Secondary Shoe & Lining 2 #046-077-00 Shoe Hold Down Spring & Cup 2 #049-012-00 Shoe Hold Down Pin #4
8	043-029-00	1	Adjuster Assembly
9	046-102-00	1	Adjusting Screw Spring
10	046-007-00	1	Adjuster Slot Plug
*11	006-193-00	5	Nut Washer Assembly
ns	054-089-00	1	Bleeder Screw (included with item #2)

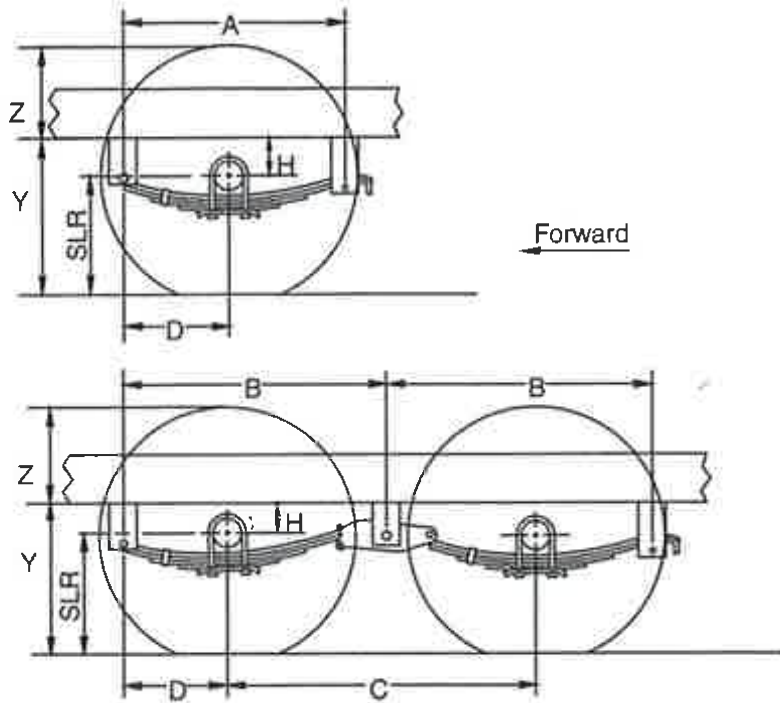
ns - not shown

* Not included with complete brake assembly. Item sold separately

Leaf Spring Application Information

7,000 lbs. Capacity

Current Production



Slipper Springs
Single Tandem

	A/P-103-10	A/P-202-10§
A	24.0	---
B	---	28.8
C	---	33.5
D	11.5	11.5
E	---	---

A,B,E - Hanger Spacing
 C - Axle Spacing
 D - Axle Location
 H - Center of Spindle
 Y - Frame Height
 Z - Top of Tire to Bottom of Frame
 SLR - Static Load Radius

To determine these values, contact your local sales engineer or distributor to run ProSpec™

Slipper Spring Axle Assemblies

Hanger Kits			Quantity per Kit	
Part #	Description	Height	HGR-110-10	HGR-202-10
028-001-00	Front Hanger	4.25"	2	2
029-001-00	Center Hanger	3.5"	---	2
030-028-00	Rear Hanger	4"	2	2

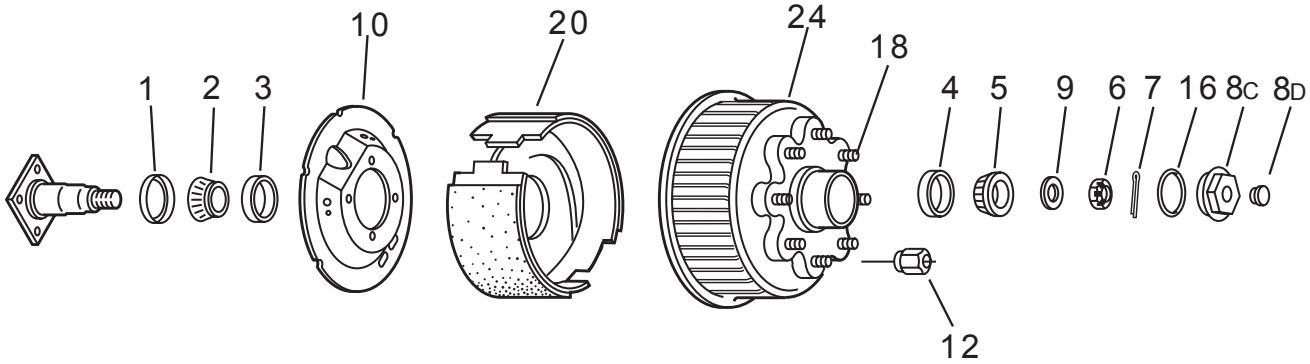
Attaching Parts Kits			Quantity per Kit	
Part #	Description		A/P-103-10	A/P-202-10§
006-007-01	9/16-18 Locknut		2	4
006-011-00	Keeper Nut		2	4
006-111-00	Equalizer Nut		---	2
007-001-01	Equalizer Bolt		---	2
007-007-00	Keeper Bolt		2	4
007-017-00	Spring Eye Bolt		2	4
013-004-00	Equalizer		---	2
013-044-01	Equalizer		---	---

§ For 33.5" axle spacing
 † For 36" axle spacing

Some combinations of hangers and spring mountings may result in insufficient bump clearance. Refer to the Miscellaneous section for additional hanger kits, A/P kits, or other tires.

865 Hub Group

8,000 lbs. Capacity



Oil Lube Parts

Item	Part #	Description
1	010-063-00	Seal (Unitized)
2	031-030-02	25580 Inner Bearing Cone
3	031-030-01	25520 Inner Bearing Cup
4	031-028-01	02420 Outer Bearing Cup
5	031-028-02	02475 Outer Bearing Cup
6	006-176-00	Spindle Nut
7	019-002-00	Cotter Pin
8C	021-035-00	Oil Cap
8D	046-032-00	Oil Cap Plug
9	005-057-00	Spindle Washer
ns	046-052-00	Oil Filler Plug (service part only)
16	010-045-00	'O'Ring for Oil Lube

12 1/4" x 3 3/8" Brakes

Item	Part #	Description
ns	K23-418-00/K23-419-00	LH/RH Hydraulic Uni-Servo
10	**	Backing Plate
20	**	Brake Shoe

Hubs

Item	Part #	Description	Bolt Circle
24	008-285-09	Oil 9/16" Stud	8 on 6.50
ns	008-287-14	Oil 9/16" Stud	8 on 6.50

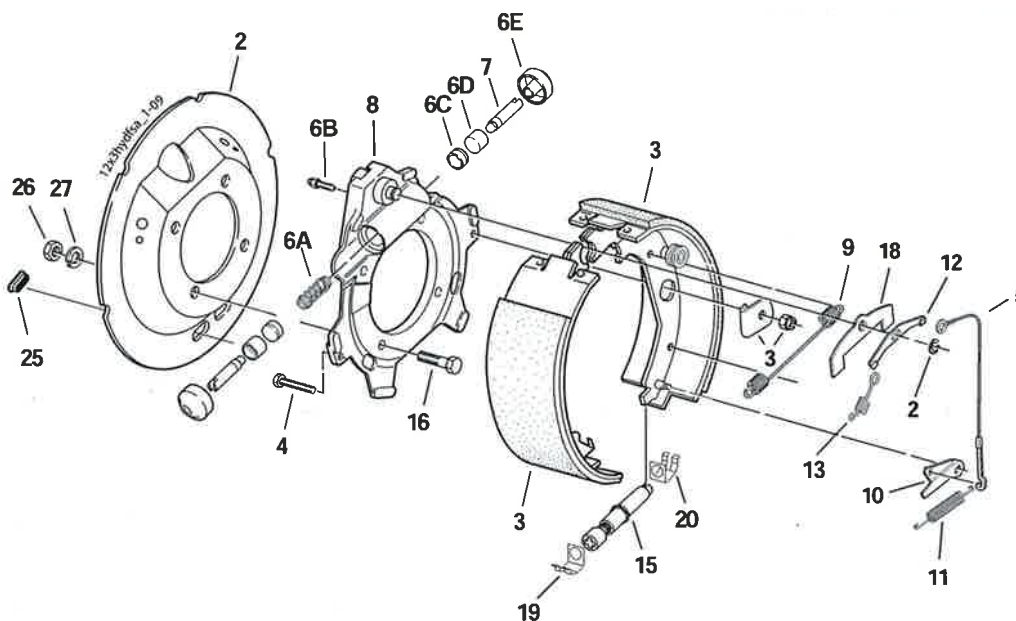
Studs & Wheel Nuts

Item	Part #	Description
12	006-053-00	9/16"-18 60° Cone Nut
18	007-132-00	9/16"-18 Press-in Stud

TRAILER PARTS

12-1/4" x 3-3/8" 8K Hydraulic Brake FSA

8,000 lbs. Capacity



Hydraulic Brake FSA

Item	Part #	Qty/Brk	Description
+0	K23-418-00	1	LH Complete Brake Assembly FSA US
+0	K23-419-00	1	RH Complete Brake Assembly FSA US
*1	036-115-20	1	Dust Shield
2	069-053-00	1	Retainer
3	K71-165-00	1	LH Shoe & Lining Kit Contains: 1 #040-199-01 LH Primary Shoe & Lining 1 #040-199-02 LH Secondary Shoe & Lining 2 #005-107-00 Shoe Hold Down Washer 2 #006-086-00 Locknut
3	K71-166-00	1	RH Shoe & Lining Kit Contains: 1 #040-200-01 RH Primary Shoe & Lining 1 #040-200-02 RH Secondary Shoe & Lining 2 #005-107-00 Shoe Hold Down Washer 2 #006-086-00 Locknut
4	007-113-00	2	Shoe Hold Down Screw
5	071-462-00	1	Adjuster Cable
6	K71-080-00	1	Wheel Cylinder Kit (1.00 Bore) Contains: 1 #046-130-00 Spring 2 #054-032-00 Boot 2 #054-041-00 Piston 2 #054-085-00 Cup 1 #054-035-00 Bleeder Screw

Item	Part #	Qty/Brk	Description
7	054-033-00	1 or 2	Cylinder Push Rod US (1) DS (2)
8	036-064-06	1	LH Spider Assembly US (incl. items 4, 6, 7)
8	036-064-07	1	RH Spider Assembly US (incl. items 4, 6, 7)
8	036-064-03	1	Spider Assembly (incl. items 4, 6, 7)
9	046-087-00	1	Retractor Spring
10	071-464-00	1	LH Adjuster Lever
10	071-463-00	1	RH Adjuster Lever
11	046-135-00	1	LH Adjuster Spring
11	046-134-00	1	RH Adjuster Spring
12	071-456-00	1	Cable Attachment Bracket
13	046-131-01	1	Extension Spring
15	048-019-00	1	LH Adjuster Assembly
15	048-020-00	1	RH Adjuster Assembly
*16	007-097-00	4	Brake Mounting Bolt
18	034-062-00	1	Piston Stop
19	046-132-00	1	Adjuster Clip (thread end)
20	046-133-00	1	Adjuster Clip (barrel end)
*25	046-0007-00	2	Adjuster Slot Plug
*26	006-129-00	4	Brake Mounting Nut
*27	005-058-00	4	Lock Washer

* Not included w/complete brake assembly. Item sold separately.
+Uni-Servo version not shown.

TRAILER PARTS

Leaf Spring Application Information

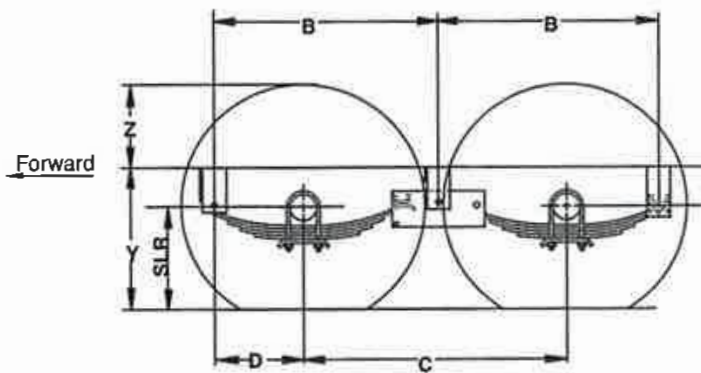
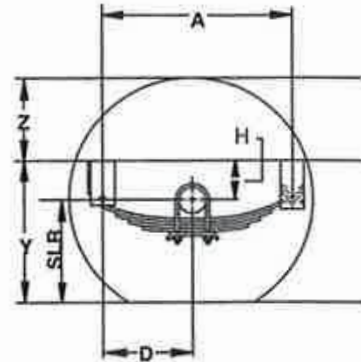
8,000 lbs. Capacity

Current Production

A,B,E - Hanger Spacing
 C - Axle Spacing
 D - Axle Location
 H - Center of Spindle
 Y - Frame Height
 Z - Top of Tire to Bottom of Frame
 SLR - Static Load Radius

To determine these values, contact your local sales engineer or distributor to run ProSpec™

Single Axles
 require 1 HAP-105-00 kit
 Tandem Axles
 require 1 HAP-105-00 kit
 and 1 HAP-205-01 kit



Slipper Springs Tandem

	A/P-216-10†
A	---
B	30.4
C	36.0
D	11.5
E	---

Slipper Spring Axle Assemblies

Hanger Kits			Quantity per Kit	
Part #	Description	Height	HGR-138-10	HGR-238-10
028-009-01	Front Hanger	5"	2	2
029-005-01	Center Hanger	4.5"	---	2
030-006-01	Rear Hanger	6.38"	2	2

Attaching Parts Kits		Quantity Per Kit
Part #	Description	A/P-216-10†
006-007-01	9/16-18 Locknut	4
006-011-00	Keeper Nut	4
006-111-00	Equalizer Nut	2
007-001-01	Equalizer Bolt	2
007-007-00	Keeper Bolt	4
007-017-00	Spring Eye Bolt	4
013-004-00	Equalizer	---
013-044-01	Equalizer	2

D80 Overhanging Per Side		
	MIN	MAX
Straight	8"	9.5"
4" Drop	9"	9.5"

§ For 33.5" axle spacing
 † For 36" axle spacing

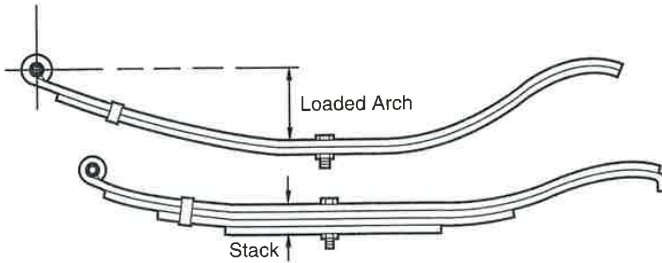
Some combinations of hangers and spring mountings may result in insufficient bump clearance. Refer to the Miscellaneous section for additional hanger kits, A/P kits, or other tires.

Hanger and Attaching Parts

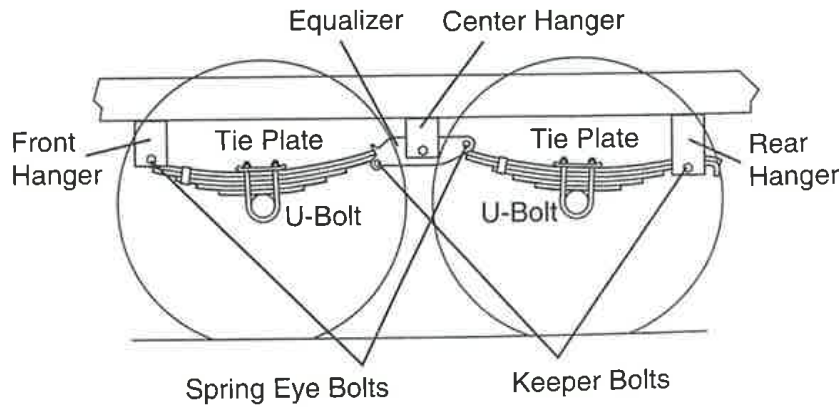
Slipper Leaf Springs

Current Production

Slipper Springs



Stack & Loaded Arch Height		
	7K	8K
Part Number	072-032-00	072-051-01
Capacity	3500	4000
Stack Height	1.80	2.52
Width (inches)	2.00	2.00
Axle Location	11.50	11.50
Loaded Arch Hgt.	2.00	2.00



Overslung Shown

Hanger Heights				
Hanger Kit	Axle Combo	Front Height	Center Height	Notes
HGR-110-00	1	4.25"	N/A	3.5K - 7K
HGR-138-00	1	5"	N/A	
HGR-202-238	2	4.25"	3.5"	
HGR-238-00	2	5"	4.5"	

Tube Diameter & Spring Pd Height - DE and SS				
Capacity	Tube Dia Std	Tube Dia Opt	Pad Ht. Std	Pad Ht. Opt.
D70	3.00	3.5	0.60	0.50
D80	3.5	N/A	0.50	N/A

Attaching Part Kits			
	33.5" Axle Spacing		36" Axle Spacing
Capacity	Single	Tandem	Tandem
D70	A/P-103-10	A/P-202-10	A/P-216-10
D80	A/P-103-10	A/P-202-10	A/P-216-10

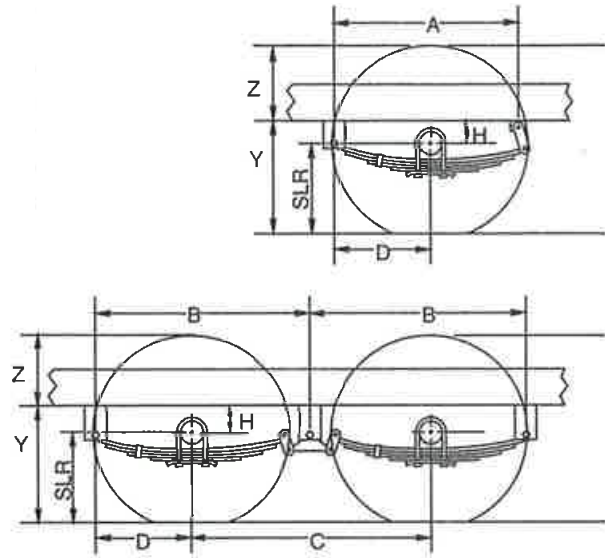
TRAILER PARTS

Leaf Spring Application Information 7,000 lbs. Capacity

Old Version

Double Eye Springs			
For Standard 33" Axle Spacing			
Single A/P-122-00 Tandem A/P-233-00 Triple A/P-335-00			
Spring Length			
	21"	24"	26"
A	19.62	23.50	25.75
B	25.00	27.50	29.50
C	28.75	31.00	33.00
D	10.62	12.00	13.00
E	28.75	31.00	33.00

Double Eye Springs			
For Optional 35" Axle Spacing			
Tandem A/P-233-00			
Spring Length			
	21"	24"	26"
B	26.00	28.50	30.50
C	30.80	33.00	35.00
D	10.62	12.00	13.00
E	30.80	33.00	35.00



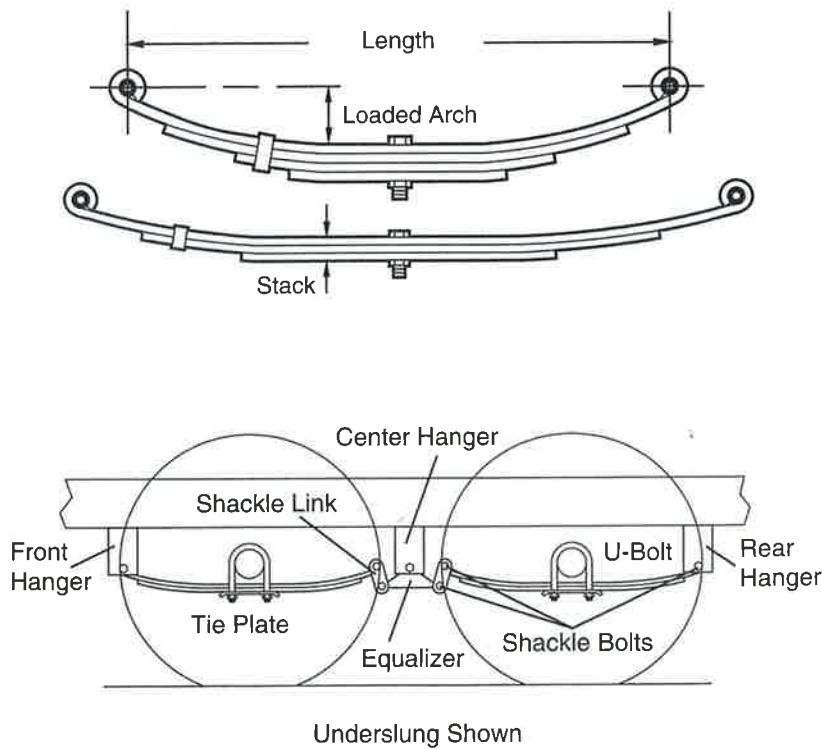
D60 Overhang Per Side			
	MIN	DISC	MAX
Straight	6.63"	9.00"	10.00"
4" Drop	7.87"	N/A	9.50"
Nev-R-Lube®	6.19"	9.00"	10.00"
D70 Overhang Per Side			
	MIN	MAX	
Straight	6.63"	9.00"	
4" Drop	7.87"	9.00"	
Nev-R-Lube®	6.37"	9.00"	

Slipper Spring Axle Assemblies

Attaching Part Kits			
Part #	Description	A/P-122-00	A/P-223-00
006-092-01	Flange Locknut	6	14
007-126-00	Shackle Bolt	2	6
013-104-02	Equalizer	---	2
013-105-02	Equalizer	---	---
013-122-02	Equalizer	---	---
013-126-02	Equalizer	---	---
018-011-00	Shackle Link	---	4
018-012-00	Shackle Link, Long	2	---
018-020-00	Shackle Link Assembly	---	4
018-021-00	Shackle Link Assembly Long	2	---

Hanger Kits		Quantity Per Kit		
Hanger Kit	Description	Height	HGR-104-00	HGR-248-00
028-005-00	Hanger	3.25"	2	4
028-006-00	Front Hanger	1.44"	---	---
029-008-00	Front Hanger	2.06"	---	---
029-031-00	Center Hanger	3.62"	---	2
030-020-00	Rear Hanger	.91"	2	---

Old Version



TRAILER PARTS

Hanger Heights			
Hanger Kit	Axle Com- bo	Front Height	Center Height
HGR-104-00	1	3.25"	N/A
HGR-248-00	2	3.25"	3.62"

Tube Diameter & Spring Pd Height - DE and SS				
Capacity	Tube Dia Std	Tube Dia Opt	Pad Ht. Std	Pad Ht. Opt.
D70	3.00	3.5	0.60	0.50

Attaching Part Kits		
33.5" Axle Spacing		
Capacity	Single	Tandem
D70	A/P-122-00	A/P-223-00

Stack & Loaded Arch Heights					
Capacity	Part Number	Stack Height	Width (inches)	Axle Location	Loaded Arch Hgt
3500	072-027-00	2.05	26	13.00	1.75